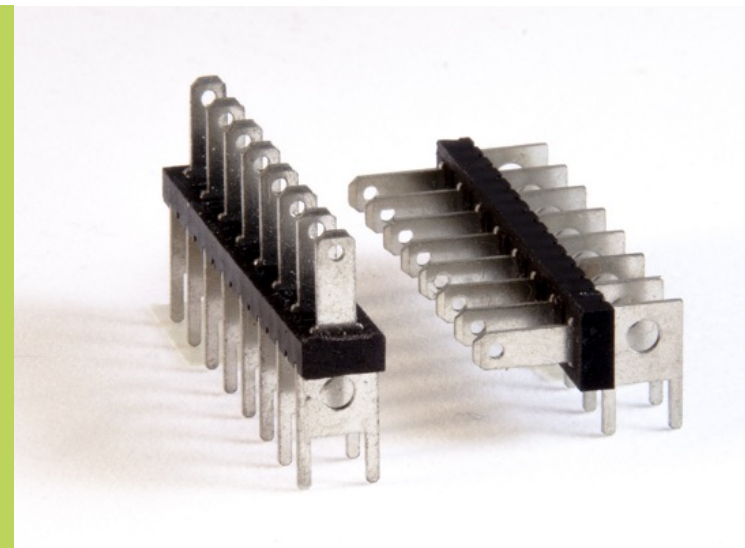
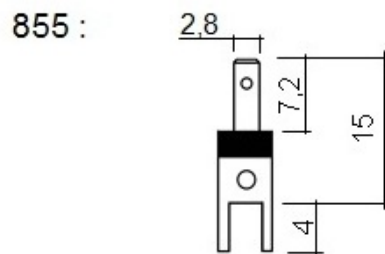
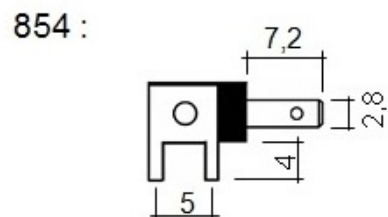
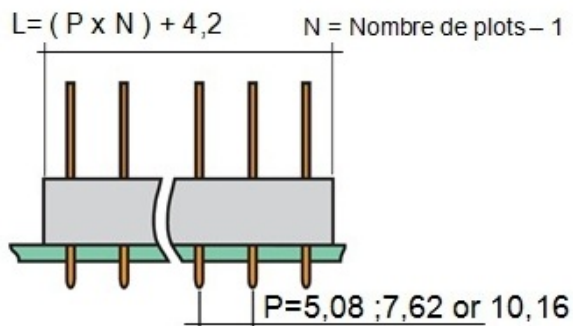


## 854 - 855

### PCB Terminal blocks quick-connect - Trelec range (spacing of 5 / 5,08 / 7,5 / 7,62 / 10 / 10,16 mm)

www.mfom.fr

 Buy this product online



#### Electrical characteristics

854 • • Rated voltage : 250 to 380 Volts • Rated current : 5 to 25 A • Spacing: 5,08 / 7,62 / 10,16 mm • Contacts: 2 to 22 • •  
855 • • Rated voltage : 250 to 380 Volts • Rated current : 5 to 25 A • Spacing: 5,08 / 7,62 / 10,16 mm • Contacts: 2 to 22

#### Material

Terminal : Brass or steel • Housing : PA 6 UL 94 VO

#### Other characteristics

Special mounting on request