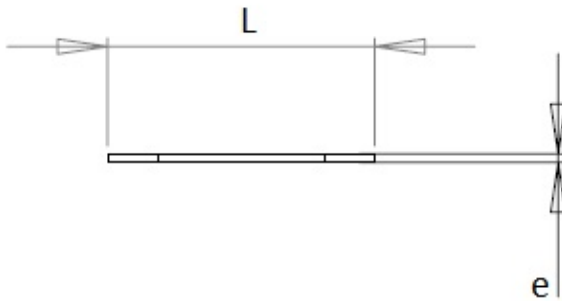
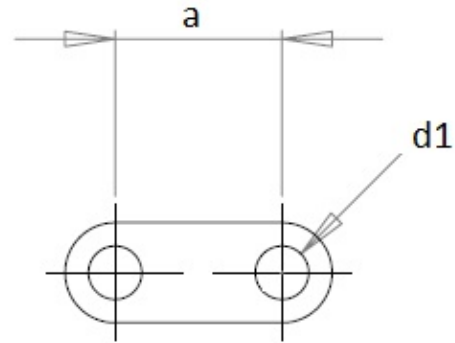


# Solder terminal lugs

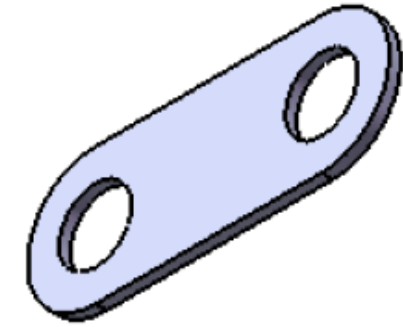
## MFOM Terminals - Solder terminals

 Buy this product online

[www.mfom.fr](http://www.mfom.fr)



	166	167
L	16,1	30
d1	3,2	5,5
e	0,5	0,5
a	10	20



### Electrical characteristics

Terminal lug 166, 167

### Material

RoHS tinned brass

### Other characteristics

Other materials and other treatments on request