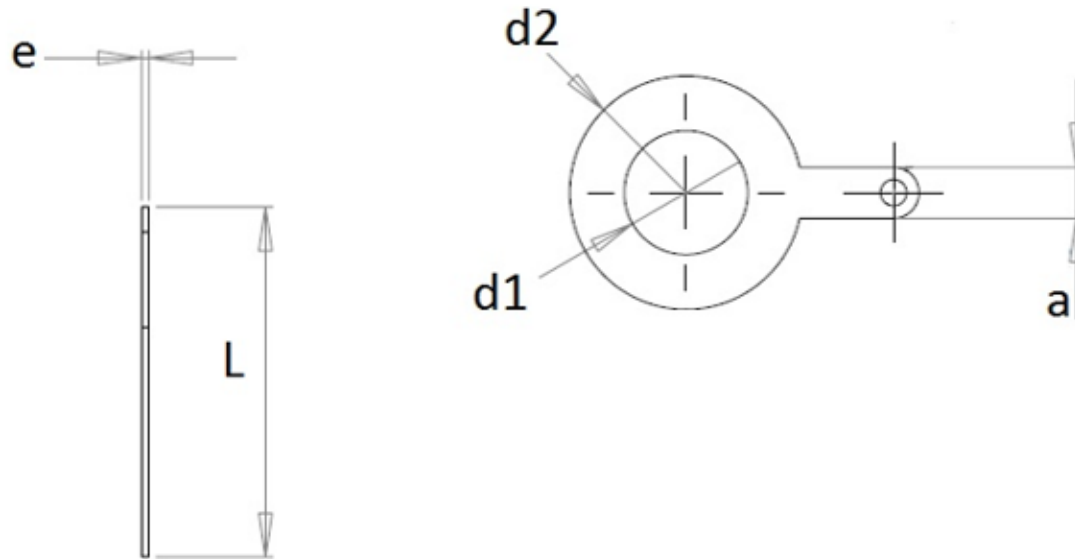


Solder terminal lugs

MFOM Terminals - Solder terminals

 Buy this product online

www.mfom.fr



	2003	2003A	2003E	2003C	2003F	14
L .. mm	22,5	24,0	24,0	24,0	24,0	31,4
d1 .. mm	8,5	8,3	9,7	10,5	12,2	14,0
d2 .. mm	13,0	16,0	16,0	16,0	16,0	24,0
a .. mm	3,5	3,5	3,5	3,5	3,5	3,5
e .. mm	0,5	0,5	0,5	0,5	0,5	0,5



Electrical characteristics

Terminal lugs 2003, 2003A, 2003C, 2003E, 2003F, 14

Material

RoHS tinned brass

Other characteristics

Other materials and other treatments on request