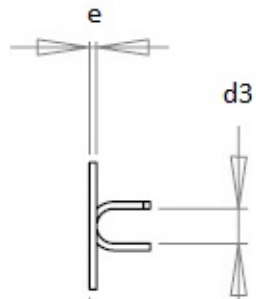
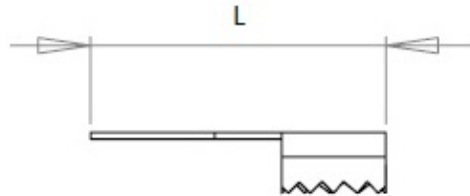
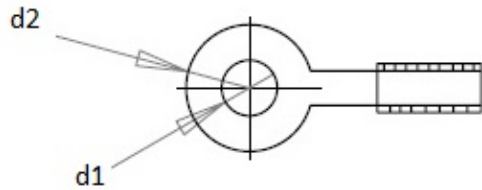


# Cable lugs

## MFOM Terminals - Cable lugs

 Buy this product online

[www.mfom.fr](http://www.mfom.fr)



(Valeurs exprimées en mm)

|    | <b>1150</b> | <b>1151</b> | <b>1153</b> |
|----|-------------|-------------|-------------|
| d1 | 3.2         | 4.2         | 3.2         |
| d2 | 7.3         | 7.3         | 7.2         |
| d3 | 2.0         | 2.0         | 1.5         |
| L  | 14.6        | 14.6        | 15.0        |
| e  | 0.4         | 0.4         | 0.4         |



### Electrical characteristics

Terminal lugs 1150, 1151, 1153

### Material

Laiton étamé RoHS

### Other characteristics

Autres matières et autres traitements sur demande