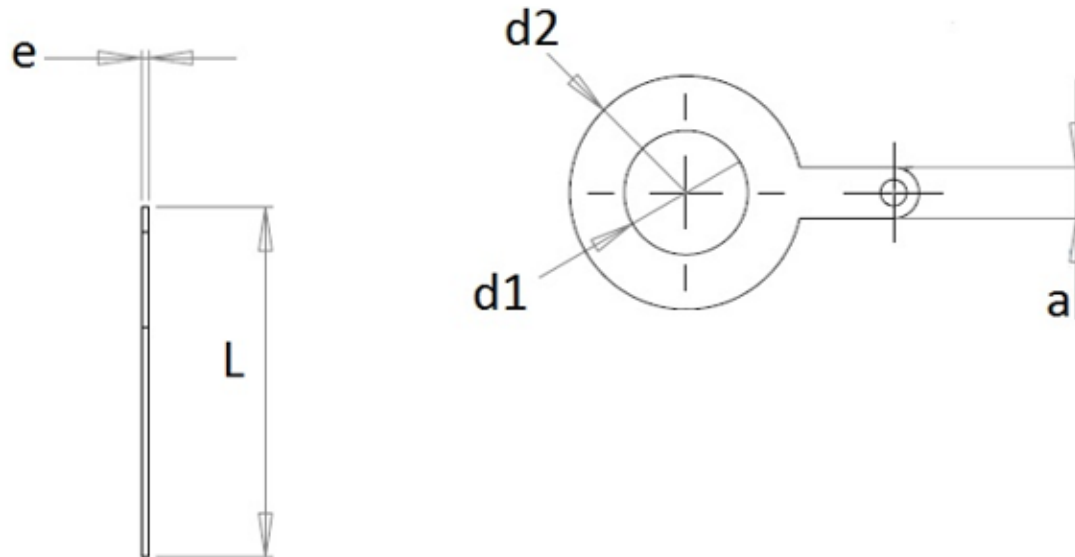


# Solder terminal lugs

## MFOM Terminals - Solder terminals

 Buy this product online

[www.mfom.fr](http://www.mfom.fr)



	2003	2003A	2003E	2003C	2003F	14
<b>L .. mm</b>	22,5	24,0	24,0	24,0	24,0	31,4
<b>d1 .. mm</b>	8,5	8,3	9,7	10,5	12,2	14,0
<b>d2 .. mm</b>	13,0	16,0	16,0	16,0	16,0	24,0
<b>a .. mm</b>	3,5	3,5	3,5	3,5	3,5	3,5
<b>e .. mm</b>	0,5	0,5	0,5	0,5	0,5	0,5



### Electrical characteristics

Terminal lugs 2003, 2003A, 2003C, 2003E, 2003F, 14

### Material

RoHS tinned brass

### Other characteristics

Other materials and other treatments on request